



RAWHIDE





We are a family-owned and operated business located in the heart of the USA.



About Us

In 2002, John McDonald invented and designed the first-ever hydraulic portable corral on wheels with multiple pens. With a background in rodeo and years of hauling portable arenas and raising livestock, John developed the flexible pinning system that would revolutionize the livestock equipment industry. Adding the electric over hydraulic power to this design forever changed the world of portable corrals on wheels. Producers found they could save time and money with his design, and John has continued to improve it over the years. Our design has been often imitated, but never duplicated.

In 2009, John developed the Rawhide Processor, by far the most versatile portable corral on the market. In 2022, he developed the largest portable corral on wheels, our Rancho Deluxe model, allowing producers to catch more cattle than ever before.

In 2024, John added the patented torsion axle suspension system and brakes to the Processor and Rancho Deluxe models, allowing for a smoother and safer ride.

Also in 2024, we unveiled John's latest invention, the patent-pending Rawhide Portable Windbreak. Built with the same ingenuity and design as our portable corrals, our Windbreak will allow producers to haul their wind protection down the road at highway speeds and through pastures and rough terrain to wherever it's needed. The Windbreak can also be used in conjunction with our portable corrals.

As a producer himself, John enjoys listening to his customers and continuing to manufacture equipment they can trust.

The thoughtfulness, ingenuity and care that go into our cattle pen designs make them the best portable corrals on the market.

Rawhide Portable Corrals are designed, manufactured and shipped from Abilene, Kansas.



Bull Riders Only' perfect fit

BY BERGMEIER
Staff Editor
TONYVALE — Growing up, John McDonald became a fan of rodeo and today he is a professional manager who promotes Bull Riders Only events.

Years ago, McDonald did not want to afford a horse, but he did not stop him from developing a passion for rodeo. He grew up in Abilene and he of whom most know might be John McDonald grew up on a farm. "But my dad owned and we couldn't afford horses, but that didn't keep me from wanting to ride. I lived in a trailer in Odessa, Texas, and I loved it."

While at Abilene High School, he became president of the Kansas School Rodeo Association. He rode for the high school national as a sophomore, junior and senior and reached the state finals all three years. He was good enough to win a rodeo scholarship at Dodge City Community College.

McDonald, 35, volunteered to help with the Wild Bill Hickok rodeo and became acquainted with rodeo star Harry Yulish of Avonmore, Pa. He also became a protégé of rodeo stock contractor Jerome Brown of Coffeyville, Kan. "I was a rodeo fan who encouraged McDonald to get his required knowledge to use his own money," McDonald said.

McDonald is a successful rodeo promoter in the country. He has produced one of the best bunches in the United States, "he said with a chuckle. "Most people might not know me in a different way, I got an Abilene riding title and was a rope for practice."

It was a year when the Wild Bill rodeo was here, he went and rode with amateur riders. "I knew all the good guys who rode," McDonald said. "I would tag along with Harry Yulish and he let me help him with the calves so I was from riding around the rodeo in Abilene helped my interest."

McDonald also competed in the rodeo rodeo where he says he earned valuable experience. He rode in rodeos until four years ago. "I learned his life's passion is a business enterprise," McDonald said. "I've covered producers who produce and sell their own horses."



BULL-RAISER — John McDonald, an Abilene graduate who lives south of Milanvale, has found a niche in "Bull Riders Only."

From those chutes bars, 1,500 pound bulls going cowboy's run for their dear lives. "I have 20 bulls and on any one of them a cowboy could score at least an 80," McDonald said, therein lies the heart of competition where spectators pay to see what they say is the most exciting event in a rodeo.

In rodeo, cowboys have a death wish mentality. They are trying to be the fastest champions scoring high scores from many events. In Bull Riders Only, the sport is reduced to its purest form. One cowboy versus one bull. The cowboy is trying to ride the bull for eight seconds and receive a score of more than 80 points.

"A stock contractor might have a few bulls of that caliber because they have to put their resources into horses and acres for those other events," McDonald said. "But I concentrate on the bulls and I have a market full of world-class animals."

Practically, it was during his childhood he was able to gain insight into portable arenas and how they could be put to good use. His semi-trailer carries longley gates and panels that can be adapted for any size arena that can provide six yards of riding space.

"It is something to see," he said, "the arena that can provide six yards of riding space."

McDonald said that he has chosen to keep pressing ahead. "Once I get rolling others started to watch," he said.

The field was wide open when he started with his first portable corral that found itself in the hands of farmers and ranchmen. Today there are nearly 10 competitors and he can only shake his head with a gentle smile because replication without reimbursement takes money out of his pocket and more importantly, he said.

PORTABLE CORRAL — John McDonald, shown in picture with his innovative corral system, which is designed to help farmers and ranchmen, has found a niche in the portable corral that he built in Odessa, Texas, and he loves it.



A semi-trailer hauls the portable arena.

McDonald said that he has chosen to keep pressing ahead. "Once I get rolling others started to watch," he said.

The field was wide open when he started with his first portable corral that found itself in the hands of farmers and ranchmen. Today there are nearly 10 competitors and he can only shake his head with a gentle smile because replication without reimbursement takes money out of his pocket and more importantly, he said.

McDonald said that he has chosen to keep pressing ahead. "Once I get rolling others started to watch," he said.

The field was wide open when he started with his first portable corral that found itself in the hands of farmers and ranchmen. Today there are nearly 10 competitors and he can only shake his head with a gentle smile because replication without reimbursement takes money out of his pocket and more importantly, he said.

Local man designs innovative corral system, draws from experience on the rodeo circuit

BY BERGMEIER
Staff Editor
TONYVALE — John McDonald, shown in picture with his innovative corral system, which is designed to help farmers and ranchmen, has found a niche in the portable corral that he built in Odessa, Texas, and he loves it.

McDonald said that he has chosen to keep pressing ahead. "Once I get rolling others started to watch," he said.

The field was wide open when he started with his first portable corral that found itself in the hands of farmers and ranchmen. Today there are nearly 10 competitors and he can only shake his head with a gentle smile because replication without reimbursement takes money out of his pocket and more importantly, he said.

McDonald said that he has chosen to keep pressing ahead. "Once I get rolling others started to watch," he said.

The field was wide open when he started with his first portable corral that found itself in the hands of farmers and ranchmen. Today there are nearly 10 competitors and he can only shake his head with a gentle smile because replication without reimbursement takes money out of his pocket and more importantly, he said.

McDonald said that he has chosen to keep pressing ahead. "Once I get rolling others started to watch," he said.

The field was wide open when he started with his first portable corral that found itself in the hands of farmers and ranchmen. Today there are nearly 10 competitors and he can only shake his head with a gentle smile because replication without reimbursement takes money out of his pocket and more importantly, he said.

McDonald said that he has chosen to keep pressing ahead. "Once I get rolling others started to watch," he said.

The field was wide open when he started with his first portable corral that found itself in the hands of farmers and ranchmen. Today there are nearly 10 competitors and he can only shake his head with a gentle smile because replication without reimbursement takes money out of his pocket and more importantly, he said.

McDonald said that he has chosen to keep pressing ahead. "Once I get rolling others started to watch," he said.

The field was wide open when he started with his first portable corral that found itself in the hands of farmers and ranchmen. Today there are nearly 10 competitors and he can only shake his head with a gentle smile because replication without reimbursement takes money out of his pocket and more importantly, he said.

RAWHIDE PORTABLE CORRAL ~ One Person Set Up! ~



Dimensions: 22' x 7' in transport
Open 104' total length

Features: 1 - 10' Bow Gate
1 - 8' Bow Gate
1 - 28' Walk Through Gate
2 - 15' Tires

Options: 1' Pipe Braces
22' Alley
Corral Length up to 164'



Patent Pending Collar Pinning System

- The Rawhide Pinning System allows for uneven terrain. Panels fold tightly together for transport!
- When folded together for transport, panels rest on racks on the main frame. Once transport wheels are removed, panels roll from racks.

RAWHIDE PORTABLE CORRAL
411 Charles Rd. • Abilene, KS 67410
Ph: 866-354-2305 785-479-1331
E-mail: mcdonald@kansas.com

Portable corral innovator sets standard

BY DAVE BERGMEIER
Staff Editor
TONYVALE — John McDonald, shown in picture with his innovative corral system, which is designed to help farmers and ranchmen, has found a niche in the portable corral that he built in Odessa, Texas, and he loves it.

McDonald said that he has chosen to keep pressing ahead. "Once I get rolling others started to watch," he said.

The field was wide open when he started with his first portable corral that found itself in the hands of farmers and ranchmen. Today there are nearly 10 competitors and he can only shake his head with a gentle smile because replication without reimbursement takes money out of his pocket and more importantly, he said.

McDonald said that he has chosen to keep pressing ahead. "Once I get rolling others started to watch," he said.

The field was wide open when he started with his first portable corral that found itself in the hands of farmers and ranchmen. Today there are nearly 10 competitors and he can only shake his head with a gentle smile because replication without reimbursement takes money out of his pocket and more importantly, he said.

McDonald said that he has chosen to keep pressing ahead. "Once I get rolling others started to watch," he said.

The field was wide open when he started with his first portable corral that found itself in the hands of farmers and ranchmen. Today there are nearly 10 competitors and he can only shake his head with a gentle smile because replication without reimbursement takes money out of his pocket and more importantly, he said.

McDonald said that he has chosen to keep pressing ahead. "Once I get rolling others started to watch," he said.

McDonald said that he has chosen to keep pressing ahead. "Once I get rolling others started to watch," he said.

The field was wide open when he started with his first portable corral that found itself in the hands of farmers and ranchmen. Today there are nearly 10 competitors and he can only shake his head with a gentle smile because replication without reimbursement takes money out of his pocket and more importantly, he said.

McDonald said that he has chosen to keep pressing ahead. "Once I get rolling others started to watch," he said.

The field was wide open when he started with his first portable corral that found itself in the hands of farmers and ranchmen. Today there are nearly 10 competitors and he can only shake his head with a gentle smile because replication without reimbursement takes money out of his pocket and more importantly, he said.

McDonald said that he has chosen to keep pressing ahead. "Once I get rolling others started to watch," he said.

The field was wide open when he started with his first portable corral that found itself in the hands of farmers and ranchmen. Today there are nearly 10 competitors and he can only shake his head with a gentle smile because replication without reimbursement takes money out of his pocket and more importantly, he said.

McDonald said that he has chosen to keep pressing ahead. "Once I get rolling others started to watch," he said.

The field was wide open when he started with his first portable corral that found itself in the hands of farmers and ranchmen. Today there are nearly 10 competitors and he can only shake his head with a gentle smile because replication without reimbursement takes money out of his pocket and more importantly, he said.

Abilene man invents portable corral

By DAVE BERGMEIER
The Abilene Reflector Chronicle
ABILENE — Combining his love of working with livestock with the economics of time constraint produced a successful idea for an Abilene man. John McDonald, owner of Rawhide Corral, was active in the bull-riding circuit. He remembers the time it took setting up pens — not necessarily how long it took — but how in different venues there was limited time to put up a corral. He kept observing not only how he set up portable corrals in arenas, but how other people set up arenas, too.

McDonald, 40, is soft-spoken but quick to observe and listen. As an



bow gate, an 8-foot bow gate and two 28-inch walk-through gates and nine 20-foot panels. The pinning system allows for uneven terrain, and it folds tightly together for transport.

When I first came up with an idea, I was living in northern Colorado and I was trying to find a way to work quickly in rodeo arenas," McDonald said.

His Rawhide Portable Corral allows one person to set up a corral that is capable of handling 100 to 150 head of cattle. The corral includes a 10-foot

bow gate, an 8-foot bow gate and two 28-inch walk-through gates and nine 20-foot panels. The pinning system allows for uneven terrain, and it folds tightly together for transport.

When I first came up with an idea, I was living in northern Colorado and I was trying to find a way to work quickly in rodeo arenas," McDonald said.

His Rawhide Portable Corral allows one person to set up a corral that is capable of handling 100 to 150 head of cattle. The corral includes a 10-foot

bow gate, an 8-foot bow gate and two 28-inch walk-through gates and nine 20-foot panels. The pinning system allows for uneven terrain, and it folds tightly together for transport.

When I first came up with an idea, I was living in northern Colorado and I was trying to find a way to work quickly in rodeo arenas," McDonald said.

His Rawhide Portable Corral allows one person to set up a corral that is capable of handling 100 to 150 head of cattle. The corral includes a 10-foot

bow gate, an 8-foot bow gate and two 28-inch walk-through gates and nine 20-foot panels. The pinning system allows for uneven terrain, and it folds tightly together for transport.

When I first came up with an idea, I was living in northern Colorado and I was trying to find a way to work quickly in rodeo arenas," McDonald said.

His Rawhide Portable Corral allows one person to set up a corral that is capable of handling 100 to 150 head of cattle. The corral includes a 10-foot

bow gate, an 8-foot bow gate and two 28-inch walk-through gates and nine 20-foot panels. The pinning system allows for uneven terrain, and it folds tightly together for transport.

When I first came up with an idea, I was living in northern Colorado and I was trying to find a way to work quickly in rodeo arenas," McDonald said.

His Rawhide Portable Corral allows one person to set up a corral that is capable of handling 100 to 150 head of cattle. The corral includes a 10-foot

bow gate, an 8-foot bow gate and two 28-inch walk-through gates and nine 20-foot panels. The pinning system allows for uneven terrain, and it folds tightly together for transport.

When I first came up with an idea, I was living in northern Colorado and I was trying to find a way to work quickly in rodeo arenas," McDonald said.

His Rawhide Portable Corral allows one person to set up a corral that is capable of handling 100 to 150 head of cattle. The corral includes a 10-foot

bow gate, an 8-foot bow gate and two 28-inch walk-through gates and nine 20-foot panels. The pinning system allows for uneven terrain, and it folds tightly together for transport.

When I first came up with an idea, I was living in northern Colorado and I was trying to find a way to work quickly in rodeo arenas," McDonald said.

His Rawhide Portable Corral allows one person to set up a corral that is capable of handling 100 to 150 head of cattle. The corral includes a 10-foot

bow gate, an 8-foot bow gate and two 28-inch walk-through gates and nine 20-foot panels. The pinning system allows for uneven terrain, and it folds tightly together for transport.

When I first came up with an idea, I was living in northern Colorado and I was trying to find a way to work quickly in rodeo arenas," McDonald said.

His Rawhide Portable Corral allows one person to set up a corral that is capable of handling 100 to 150 head of cattle. The corral includes a 10-foot

bow gate, an 8-foot bow gate and two 28-inch walk-through gates and nine 20-foot panels. The pinning system allows for uneven terrain, and it folds tightly together for transport.

When I first came up with an idea, I was living in northern Colorado and I was trying to find a way to work quickly in rodeo arenas," McDonald said.

His Rawhide Portable Corral allows one person to set up a corral that is capable of handling 100 to 150 head of cattle. The corral includes a 10-foot

bow gate, an 8-foot bow gate and two 28-inch walk-through gates and nine 20-foot panels. The pinning system allows for uneven terrain, and it folds tightly together for transport.

When I first came up with an idea, I was living in northern Colorado and I was trying to find a way to work quickly in rodeo arenas," McDonald said.

His Rawhide Portable Corral allows one person to set up a corral that is capable of handling 100 to 150 head of cattle. The corral includes a 10-foot

Farm stuff

Expo offers traditional, new equipment

By THE EDITOR
The Abilene Reflector Chronicle
ABILENE — The Abilene Reflector Chronicle is proud to announce that the 1996 Farm Expo will be held on Saturday, September 14, from 9 a.m. to 5 p.m. at the Abilene Convention Center.

The expo will feature a wide variety of farm equipment, including tractors, combines, and other machinery. There will also be demonstrations of the latest in farm technology, including GPS and precision farming.

The expo is a great opportunity for farmers to learn about the latest in farm equipment and technology. It is also a great place to meet with other farmers and share ideas.

The expo is free and open to the public. For more information, contact the Abilene Reflector Chronicle at (817) 342-1234.

The expo is a great opportunity for farmers to learn about the latest in farm equipment and technology. It is also a great place to meet with other farmers and share ideas.

The expo is free and open to the public. For more information, contact the Abilene Reflector Chronicle at (817) 342-1234.



The expo will feature a wide variety of farm equipment, including tractors, combines, and other machinery. There will also be demonstrations of the latest in farm technology, including GPS and precision farming.

The expo is a great opportunity for farmers to learn about the latest in farm equipment and technology. It is also a great place to meet with other farmers and share ideas.

The expo is free and open to the public. For more information, contact the Abilene Reflector Chronicle at (817) 342-1234.

The expo is a great opportunity for farmers to learn about the latest in farm equipment and technology. It is also a great place to meet with other farmers and share ideas.

The expo is free and open to the public. For more information, contact the Abilene Reflector Chronicle at (817) 342-1234.

Timeline

1995
John McDonald began the initial drawings and research and development on his pinning system

2002
Rawhide begins

2009
Processor model released

2022
Rancho Deluxe model released

2024
Torsion axle suspension unveiled
Windbreak released

Rawhide Processor



Rawhide Classic



Rawhide Rancho Deluxe



Rawhide Portable Windbreak



Features of All Rawhide Portable Corrals

- Four man-pass gates; no climbing
- Self-contained power unit with deep cycle battery
- 20-watt solar charger
- 2 $\frac{3}{8}$ -inch pipe braces
- Solid rubber wheels on each panel
- Chain on end panels for safety and packaging



The **RAWHIDE** Difference



Made in the USA



Durability



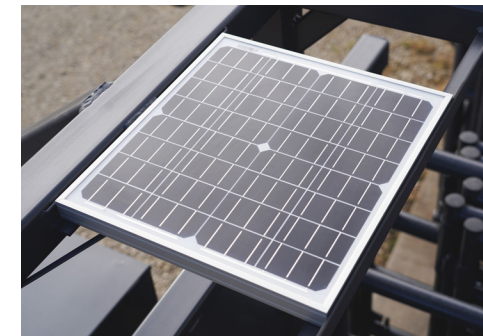
Hydraulics

Strongest Pipe on a Portable Corral on the Market



Racking system
U.S. Patent No. 11,979,990

Features



Electric over hydraulic with 20-watt solar charger



Patented torsion axle suspension
U.S. Patent No. 11,793,158

Rawhide Processor

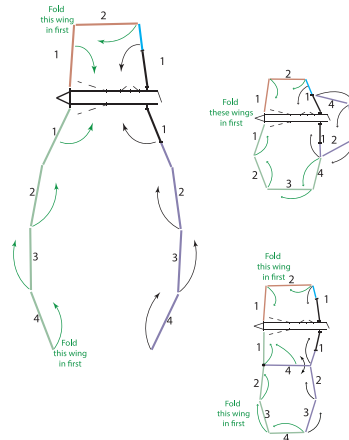
- Fast, 10-minute setup
- Saves labor
- No lifting: Electric over hydraulic with 20-watt solar charging system
- Entire system can be driven through with a dually pickup, with round bale
- Pulls at speed limit during highway transport
- Fits in same gate as a pickup
- Durable equipment with much longer life than other products
- Pinning system allows for flexibility on uneven terrain
- Panels fold against each other without unpinning one from another
- Multiple pen options
- Frame gates for sorting
- All panels work like gates
- Unlimited configurations: Equipment can be added or moved around system
- Permanently sheeted, adjustable **hydraulic** alley allows you to narrow the alley for calves
- Alternative to hauling your cattle home to process; can work on-site

Processor Options:

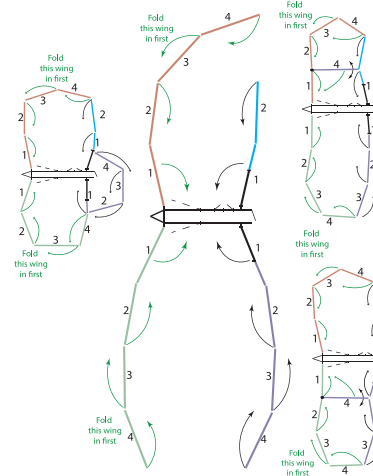
- Head gate mounted on framework at end of alley
- Loading chute: Two semi heights and a ground loading height with adjustable flooring

Specifications	Standard	Large	Super Large
Capacity	100 head, 800 wt	200 head, 800 wt	300 head, 800 wt
Torsion axle suspension	✓	✓	✓
Gooseneck	✓	✓	✓
Permanent sheeted hydraulic alley	✓	✓	✓
10-foot bow gates for sorting	4	4	4
Main frame/alley length	24 feet	24 feet	24 feet
14-ply, 8-hole, 16-inch tires with vinyl fenders	2	2	2
18-foot x 6-foot panels	9	12	15
8-foot x 6-foot panels	2	2	2
Palpation/access gates in alley	2	2	2
No-back alley stop	1	1	1
32-inch alley exit gate	1	1	1
Length when open	95 feet	135 feet	175 feet

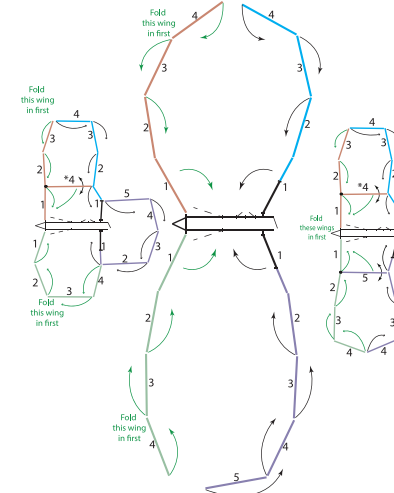
Standard Rawhide Processor



Large Rawhide Processor



Super Large Rawhide Processor





Loading chute



Head gate

Quality construction and workmanship provides lasting strength for an affordable investment.

“ We love our Processor. Here in Virginia, we run a lot of small groups on rented ground, 20-45 pairs. I have not once been at a spot where we could not use our corral.

—Robbie Reeves, Valley View Farms, Mt. Solon, VA

“ It’s the best investment I ever made. It’s easier on the cattle and easier on me.

—Charles See, Stark, KS



Stable on Uneven Terrain

Wheels on each panel and electric over hydraulic jack eliminates lifting and saves time.

- Frame gates for sorting
- Transport wheels are permanent with torsion axle suspension; no sliding off the axles and rolling out of the way
- Permanently sheeted hydraulic adjustable alley

Rawhide Classic



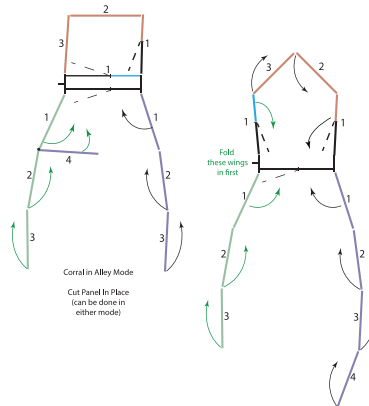
- Fast, 10-minute setup
- No lifting: Electric over hydraulic with 20-watt solar charging system
- Entire system can be driven through with bale or cube feeder
- Transport wheels are removable, with added stabilizer bar for additional safety
- Multiple pen options
- Pulls at speed limit during highway transport
- All panels work like gates
- Durable equipment with much longer life than other products
- Unlimited configurations: Equipment can be added or moved around system
- Sheeted, temporary alley can be put in place; adjust width for cows or calves

Classic Options:

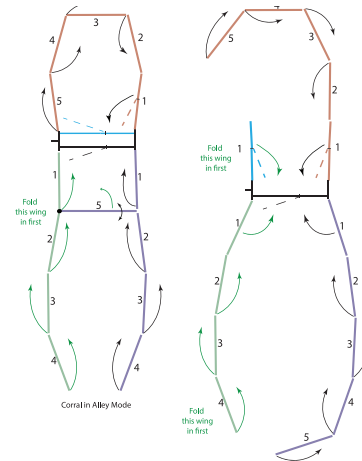
- Bumper pull or gooseneck
- Head gate

Specifications	Standard	Large	Super Large
Capacity	100 head, 800 wt	200 head, 800 wt	300 head, 800 wt
10-foot bow gates for sorting	3	3	3
Main frame/alley length	24 feet	24 feet	24 feet
14-ply, 8-hole, 16-inch tires with vinyl fenders	2	2	2
20-foot x 6-foot panels	7	8	9
18-foot x 6-foot panels	2	3	4
8-foot x 6-foot panels	2	2	2
32-inch alley exit gate	1	1	1
Length when open	75 feet	135 feet	135 feet

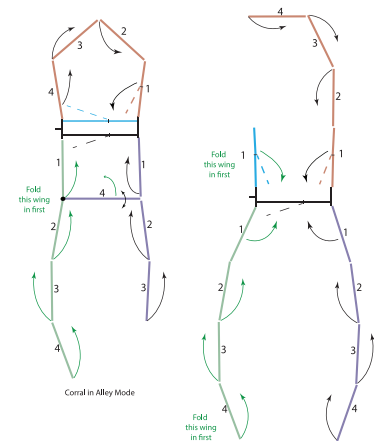
Standard Rawhide Classic



Large Rawhide Classic



Super Large Rawhide Classic



Rawhide Rancho Deluxe

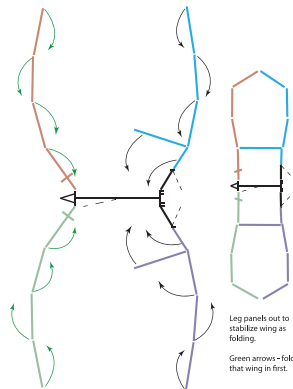
Largest Portable Corral on Wheels



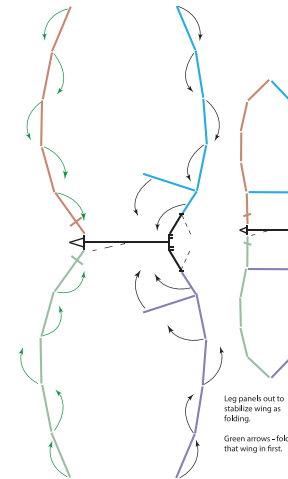
- Perfect for catching, sorting and loading large numbers
- No lifting: Electric over hydraulic with 20-watt solar charging system
- Pulls at speed limit during highway transport
- Dual transport wheels
- Patented torsion axle suspension system
- Forms two to four pens

Specifications	Standard	Large	Super Large
Capacity	400 head, 800 wt	500 head, 800 wt	600 head, 800 wt
10-foot bow gates for sorting	3	3	3
Main frame/alley length	24 feet	24 feet	24 feet
14-ply, 8-hole, 16-inch tires with vinyl fenders	4	4	4
22-foot x 6-foot panels	9	11	13
8-foot x 6-foot panels	2	2	2
Length when open	150 feet	190 feet	230 feet

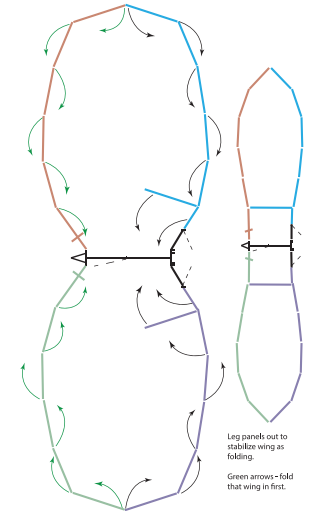
Standard Rancho Deluxe



Large Rancho Deluxe



Super Large Rancho Deluxe



Rawhide Portable Windbreak

- Patent pending, with the same quality and durability as our Rawhide Portable Corrals
- Flexible pinning system compatible to use in conjunction with our corrals
- Pulls at highway speed
- Hydraulically raise and lower roof with four cylinders; pipe braces for roof in 'up' mode; center frame support for roof on each side; roof is 24 feet long and 19 feet wide
- Anchor system with drill and charger provided; includes six 8-foot-long, 18-inch screw anchors
- Panels: 8-foot-tall and 24-foot-long panels; strategic 5-inch lateral slots to allow for some wind to pass through
- Wheels: Double, solid rubber wheels on each panel
- Power: 20-watt solar charger, electric over hydraulic; inverter to convert from 12 to 110 volts (charges battery and charging system for drill)

Windbreak Options:

- Calving pen with head gate and creep panels for "calf only" under roof



Roof with brace from outside

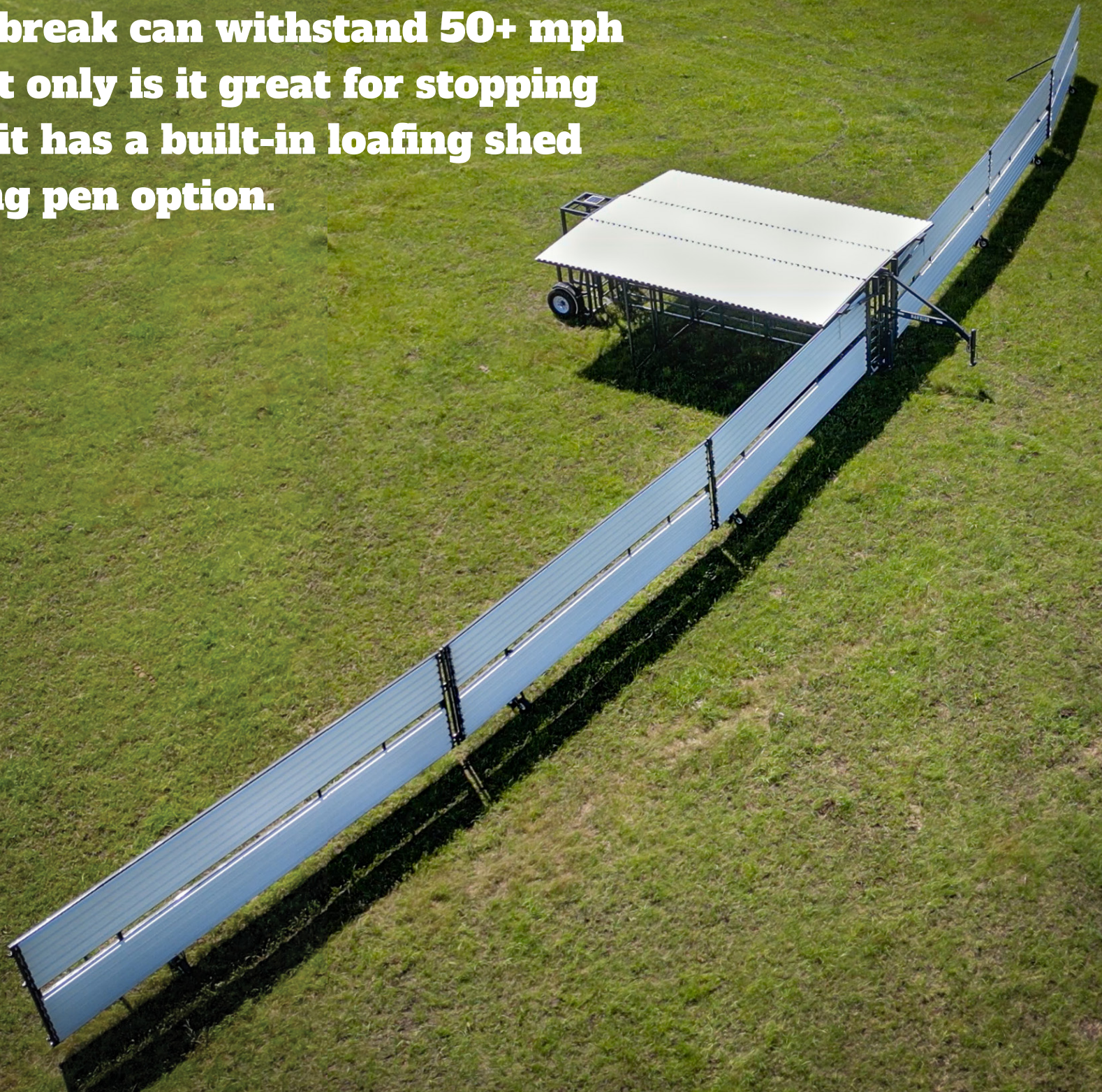


Anchor brace



Double wheels

The Windbreak can withstand 50+ mph winds. Not only is it great for stopping wind, but it has a built-in loafing shed and calving pen option.



RAWHIDE



www.rawhideportablecorral.com



785-263-3436 • 900 N. Washington St. Abilene, Kansas

Sold locally by:

