



RAWHIDE





**Somos una empresa familiar
ubicada en el corazón de los
EE. UU.**



Sobre Nosotros

En 2002, John McDonald inventó y diseñó el primer corral hidráulico portátil en ruedas con múltiples corrales. Con experiencia en el rodeo y años de cargar arenas portátiles y criando ganado, John desarrolló el sistema de fijación flexible que revolucionaría la industria de equipo de ganado. Agregando el poder eléctrico sobre el poder hidráulico a este diseño para siempre cambió el mundo de los corrales portátiles en ruedas. Productores encontraron que podían ahorrar tiempo y dinero con su diseño, y John ha continuado a mejorarlo sobre los años. A menudo nuestro diseño ha sido imitado, pero nunca duplicado.

En 2009, John desarrolló el Rawhide Processor, el corral portátil más versátil en el mercado. En 2022, desarrolló el corral portátil más grande sobre ruedas, nuestro modelo Rawhide Deluxe, dejando a los productores capturar más ganado que nunca.

En 2024, John agregó el sistema patentado de suspensión del eje de torsión y frenos a los modelos Processor y Rancho Deluxe, permitiendo un viaje más suave y seguro.

También en 2024, revelamos el último invento de John, el patente pendiente Rawhide Portable Windbreak. Construido con la misma ingenuidad y diseño que nuestros corrales portátiles, nuestro Windbreak dejará productores cargar su protección de viento por la carretera a velocidades de la autopista, por pasturas y terreno accidentado a donde sea que se necesite. También, El Windbreak puede ser utilizado con nuestros corrales portátiles.

Como productor él mismo, John disfruta escuchando a sus clientes y continuando a fabricar equipo en los que pueden confiar.

La consideración, el ingenio y el cuidado que van a nuestros diseños de corrales de ganado los hacen los mejores corrales portátiles del mercado.

Rawhide Portable Corrales son diseñados, fabricados y enviados desde Abilene, Kansas.



Bull Riders Only' perfect fit

BY BERGMEIER
Staff Editor
TONYVALE — Growing up in Tonyvale, John McDonald became a rodeo rider and today he is a professional manager who promotes Bull Riders Only events.

“I was a rodeo rider for 10 years, but I never rode a horse, but I rode a steer up on a rodeo arena in Abilene and he of the high school rodeo team,” McDonald grew up on a farm. “But my dad owned and we worked horses, but that didn’t keep me interested in rodeo. I loved it in the rodeo arena.”

While at Abilene High School, he became president of the Kansas School Rodeo Association. He rode for the high school national as a sophomore, junior and senior and reached the state finals all years. He was good enough to win a rodeo scholarship at Dodge City Community College.

McDonald, 35, volunteered to help with the Wild Bill Hickok rodeo and became acquainted with rodeo coach Harry Yoder of Avonlea. He also became a protégé of rodeo stock contractor Jerome Brown of Coffeyville, Kan. It was Robinson who encouraged McDonald to get his acquired knowledge and talent to use in his own business.

McDonald is a successful rodeo promoter in the country. He has produced some of the best bunch runs in the United States. “I was a cowboy,” McDonald says. “I would tag along with Harry Yoder and he let me help manage the calves so I was from riding around the rodeo in Abilene and I had my interest.”

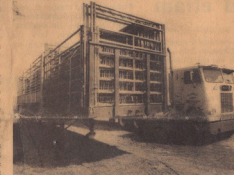
McDonald also competed in the rodeo where he says he earned valuable experience. He rode in rodeos until four years ago. “I learned his life, his business enterprise,” McDonald says. “I learned how to manage several producers who par-



BULL-RAISER — John McDonald, an Abilene graduate who lives south of Milanvale, has found a niche in “Bull Riders Only.”

icipate in Bull Riders Only, but he realized he couldn’t stay in Kansas. He will be producing an event Sept. 14 at the Kansas Coliseum in Wichita. His production about 50 shows a year with about a third of them receiving national television exposure. He first started in Wellington, Colo. but the unfair growth of the Rocky Mountain front range led him and his wife, the former Mary Beth Robinson of Solonson and their three children, to buy a farm 14 miles south of Wellington in Ottawa County about 15 months ago.

“I started doing this about six years ago,” he said. “I provide the stock that the Utah Jax play and turn it into an arena.”



A semi-trailer trailer hauls the portable arena.

Practically a year during his childhood he was able to gain insight into portable arenas and how they could be profitable. “That acquired knowledge has been put to good use. His semi-trailer trailer carries lengthy gates and panels that can be adapted for any size arena that can provide six to eight acres.”

“It is something to see,” he said of the arena that can provide six to eight acres.



Local man designs innovative corral system, draws from experience on the rodeo circuit

PORTABLE CORRAL — John McDonald, shown in picture with his innovative corral system, which is designed to help farmers and ranchers, has developed a portable corral that can be adapted for any size arena that can provide six to eight acres.

BY BERGMEIER
Staff Editor
Covering the best of working with livestock, the rodeo circuit and the rodeo industry.

1995

John McDonald empieza los dibujos e investigaciones iniciales y desarrollo en su sistema de fijación.

2002

Rawhide empezó

2009

Modelo Processor es lanzado

2022

Modelo Rancho Deluxe es lanzado

2024

Se revela la suspensión del eje de torsión Windbreak es revelado

RAWHIDE PORTABLE CORRAL

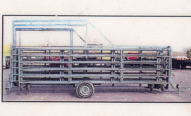
~ One Person Set Up! ~



Dimensions: 22' x 7' in transport
Open 104' total length

- Features: 1 - 10' Bow Gate
- 1 - 8' Bow Gate
- 1 - 28' Walk Through Gate
- 2 - 15' Tires

- Options: 1' Pipe Braces
- 22' Alley
- Corral Length up to 164'



Patent Pending Collar Pinning System

- The Rawhide Pinning System allows for uneven terrain. Panels fold tightly together for transport!
- When folded together for transport, panels rest on racks on the main frame. Once transport wheels are removed, panels roll from racks.

RAWHIDE PORTABLE CORRAL

411 Charles Rd. • Abilene, KS 67410
Ph: 866-354-2305 785-479-1331

E-mail: mcdonald@kansas.com

Portable corral innovator sets standard

BY DAVE BERGMEIER
Staff Editor

If copying is a form of flattery, it may be the most insidious.

John McDonald knows that first hand. The Abilene entrepreneur and his wife, Mary, have been the mainstay of Rawhide Portable Corral, 387 Argusville, since 1987.

The innovator, with his portable corral design that can allow one rancher to work with up to 400 head of cattle at a time, has experienced the rural agriculture economy, with its traditional up and down. He also has watched competitors copy his work. He prefers not to mention competitor names. McDonald has applied for numerous patents, but as many inventors find, the process is expensive and time consuming, so he has chosen to keep pressing ahead.

“Once I get rolling others started to watch,” he said.

The field was wide open when he started with his first portable corral that found itself in the hands of farmers and ranchers. Today there are nearly 10 competitors and he can only shake his head with a gentle smile because replication without reimbursement takes money out of his pocket and more importantly creates a misperception that he is no longer a producer his product.

“They figured out in the best or they copied it,” McDonald bluntly says. “You cannot go to a farm show and not see my design.”

Today, he is battle-worn to the competitors and Rawhide Portable Corral, and his firm is a success story in the ag-business field. Rawhide Portable Corral started with about \$500 in investment, which now employs nine people, generates about \$1.5 million to \$2 million a year in annual sales.

His new design allows one person to have a portable corral set up in about 10 minutes and can work with 150 to 400 head of cattle without filling a week, according to information from his company’s website www.rawhideportablecorral.com.

The portable corral system has hydraulic transport wheels that are raised and lowered with the flip of a switch. He demonstrated another feature that allows the rancher to narrow the alley for calves as well as separate cattle in the alley. Also a loading chute may be built in. A 15-amp solar panel is standard equipment to recharge the battery. More than 20 different corral configurations are possible.

McDonald said the design works on extreme uneven terrain. There is no manual lifting of pens and panels, which makes it safer for the operator.

The new design has even caused more interest from his first customers for there to be in their original corral. Prices range on his latest portable corral system from \$12,000 to \$23,000.

“We’ve been super busy,” he said. The agriculture sector has been a

portantly creates a misperception that he is no longer a producer his product.

“They figured out in the best or they copied it,” McDonald bluntly says. “You cannot go to a farm show and not see my design.”

Today, he is battle-worn to the competitors and Rawhide Portable Corral, and his firm is a success story in the ag-business field. Rawhide Portable Corral started with about \$500 in investment, which now employs nine people, generates about \$1.5 million to \$2 million a year in annual sales.

His new design allows one person to have a portable corral set up in about 10 minutes and can work with 150 to 400 head of cattle without filling a week, according to information from his company’s website www.rawhideportablecorral.com.

The portable corral system has hydraulic transport wheels that are raised and lowered with the flip of a switch. He demonstrated another feature that allows the rancher to narrow the alley for calves as well as separate cattle in the alley. Also a loading chute may be built in. A 15-amp solar panel is standard equipment to recharge the battery. More than 20 different corral configurations are possible.

McDonald said the design works on extreme uneven terrain. There is no manual lifting of pens and panels, which makes it safer for the operator.

The new design has even caused more interest from his first customers for there to be in their original corral. Prices range on his latest portable corral system from \$12,000 to \$23,000.

“We’ve been super busy,” he said. The agriculture sector has been a



PORTABLE CORRAL INNOVATOR — John (pictured) and Mary McDonald (not pictured) continue to be the leaders in portable corrals with their business Rawhide Portable Corral, 387 Argusville. (Photo by Dave Bergmeier)

and understands the need for efficiency.

“When I designed the first Rawhide I developed the idea when I was loading bulls,” he said.

“I have a knack with livestock equipment. I was an engineer, but in a cowboy world you take it a bit of personal experience who has an understanding of what works for his customers.”

His idea originated for the portable corral came as a result of years of practice of working with livestock. Many farmers and ranchers put together corral panels by hand. As farms and ranches grew in size, producers needed

flexibility and time savings. Plus there is a skill and expertise to working with livestock, he said.

“Finding the right type of labor is hard,” he said. “Some producers have small operations that might not be laid out for traditional corrals. The expense a building and maintaining permanent corrals is another challenge.”

Rawhide Portable Corral has sold more than 1,000 systems in the past six years. The latest design takes into account the size of producers but also provides more options from the first design. The newest portable corral has added portability. The goose-neck design allows the corral owner to pull an entire system down the highway at 70 mile per hour. He has customers who have separate operations that can sever hundreds of miles apart.

To this end he remains loyal, providing supplies from local businesses. He points to that as a point of pride.

“I could have ordered it from out of town but I wanted to set an example, he said.

One reason he agreed to do an interview was that he wanted to make sure that customers know that he and Mary portable corrals are being made and sold throughout the United States.

Having an Interstate 70 location is central part of the United States is a asset. He encourages new owners drive their corral to Abilene to see it overnight. McDonald likes to mail himself available to answer questions before the customers leave the lot. Customer service is a source of pride for McDonald, which he learned at an early age from mowing grass to distributing newspaper.

“There were 10 to 15 fewer customers than we had,” McDonald said. “It was a lot of people we lost because we were across of the Saline channel.”

Wenger said the investment in providing some compensation to the farm show trade show of introducing new products.

“Farm shows are about what we do and done that

“We thought we could build a prototype and work through all the kinks that come up,” McDonald said, adding that the first corral built was never sold. “I had the drawings and the ideas in my head, but I didn’t know what I had until we actually built the first one. I didn’t like it. It was too sloppy and I needed to tighten the plans.”

His experimentation started in February 1993. He decided to be patient in view of the persistent drought of the previous winter.

He contacted his friend Matt Engle, who has a shop on the south edge of town.

“We thought we could build a prototype and work through all the kinks that come up,” McDonald said, adding that the first corral built was never sold. “I had the drawings and the ideas in my head, but I didn’t know what I had until we actually built the first one. I didn’t like it. It was too sloppy and I needed to tighten the plans.”

His experimentation started in February 1993. He decided to be patient in view of the persistent drought of the previous winter.

He contacted his friend Matt Engle, who has a shop on the south edge of town.

“We thought we could build a prototype and work through all the kinks that come up,” McDonald said, adding that the first corral built was never sold. “I had the drawings and the ideas in my head, but I didn’t know what I had until we actually built the first one. I didn’t like it. It was too sloppy and I needed to tighten the plans.”

His experimentation started in February 1993. He decided to be patient in view of the persistent drought of the previous winter.

He contacted his friend Matt Engle, who has a shop on the south edge of town.

“We thought we could build a prototype and work through all the kinks that come up,” McDonald said, adding that the first corral built was never sold. “I had the drawings and the ideas in my head, but I didn’t know what I had until we actually built the first one. I didn’t like it. It was too sloppy and I needed to tighten the plans.”

His experimentation started in February 1993. He decided to be patient in view of the persistent drought of the previous winter.

He contacted his friend Matt Engle, who has a shop on the south edge of town.

“We thought we could build a prototype and work through all the kinks that come up,” McDonald said, adding that the first corral built was never sold. “I had the drawings and the ideas in my head, but I didn’t know what I had until we actually built the first one. I didn’t like it. It was too sloppy and I needed to tighten the plans.”

His experimentation started in February 1993. He decided to be patient in view of the persistent drought of the previous winter.

He contacted his friend Matt Engle, who has a shop on the south edge of town.

“We thought we could build a prototype and work through all the kinks that come up,” McDonald said, adding that the first corral built was never sold. “I had the drawings and the ideas in my head, but I didn’t know what I had until we actually built the first one. I didn’t like it. It was too sloppy and I needed to tighten the plans.”

His experimentation started in February 1993. He decided to be patient in view of the persistent drought of the previous winter.

He contacted his friend Matt Engle, who has a shop on the south edge of town.

“We thought we could build a prototype and work through all the kinks that come up,” McDonald said, adding that the first corral built was never sold. “I had the drawings and the ideas in my head, but I didn’t know what I had until we actually built the first one. I didn’t like it. It was too sloppy and I needed to tighten the plans.”

His experimentation started in February 1993. He decided to be patient in view of the persistent drought of the previous winter.

He contacted his friend Matt Engle, who has a shop on the south edge of town.

“We thought we could build a prototype and work through all the kinks that come up,” McDonald said, adding that the first corral built was never sold. “I had the drawings and the ideas in my head, but I didn’t know what I had until we actually built the first one. I didn’t like it. It was too sloppy and I needed to tighten the plans.”

His experimentation started in February 1993. He decided to be patient in view of the persistent drought of the previous winter.

He contacted his friend Matt Engle, who has a shop on the south edge of town.

“We thought we could build a prototype and work through all the kinks that come up,” McDonald said, adding that the first corral built was never sold. “I had the drawings and the ideas in my head, but I didn’t know what I had until we actually built the first one. I didn’t like it. It was too sloppy and I needed to tighten the plans.”

His experimentation started in February 1993. He decided to be patient in view of the persistent drought of the previous winter.

He contacted his friend Matt Engle, who has a shop on the south edge of town.

“We thought we could build a prototype and work through all the kinks that come up,” McDonald said, adding that the first corral built was never sold. “I had the drawings and the ideas in my head, but I didn’t know what I had until we actually built the first one. I didn’t like it. It was too sloppy and I needed to tighten the plans.”

His experimentation started in February 1993. He decided to be patient in view of the persistent drought of the previous winter.

He contacted his friend Matt Engle, who has a shop on the south edge of town.

“We thought we could build a prototype and work through all the kinks that come up,” McDonald said, adding that the first corral built was never sold. “I had the drawings and the ideas in my head, but I didn’t know what I had until we actually built the first one. I didn’t like it. It was too sloppy and I needed to tighten the plans.”

His experimentation started in February 1993. He decided to be patient in view of the persistent drought of the previous winter.

He contacted his friend Matt Engle, who has a shop on the south edge of town.

“We thought we could build a prototype and work through all the kinks that come up,” McDonald said, adding that the first corral built was never sold. “I had the drawings and the ideas in my head, but I didn’t know what I had until we actually built the first one. I didn’t like it. It was too sloppy and I needed to tighten the plans.”

His experimentation started in February 1993. He decided to be patient in view of the persistent drought of the previous winter.

He contacted his friend Matt Engle, who has a shop on the south edge of town.

“We thought we could build a prototype and work through all the kinks that come up,” McDonald said, adding that the first corral built was never sold. “I had the drawings and the ideas in my head, but I didn’t know what I had until we actually built the first one. I didn’t like it. It was too sloppy and I needed to tighten the plans.”

His experimentation started in February 1993. He decided to be patient in view of the persistent drought of the previous winter.

He contacted his friend Matt Engle, who has a shop on the south edge of town.

“We thought we could build a prototype and work through all the kinks that come up,” McDonald said, adding that the first corral built was never sold. “I had the drawings and the ideas in my head, but I didn’t know what I had until we actually built the first one. I didn’t like it. It was too sloppy and I needed to tighten the plans.”

His experimentation started in February 1993. He decided to be patient in view of the persistent drought of the previous winter.

He contacted his friend Matt Engle, who has a shop on the south edge of town.

“We thought we could build a prototype and work through all the kinks that come up,” McDonald said, adding that the first corral built was never sold. “I had the drawings and the ideas in my head, but I didn’t know what I had until we actually built the first one. I didn’t like it. It was too sloppy and I needed to tighten the plans.”

His experimentation started in February 1993. He decided to be patient in view of the persistent drought of the previous winter.

He contacted his friend Matt Engle, who has a shop on the south edge of town.

“We thought we could build a prototype and work through all the kinks that come up,” McDonald said, adding that the first corral built was never sold. “I had the drawings and the ideas in my head, but I didn’t know what I had until we actually built the first one. I didn’t like it. It was too sloppy and I needed to tighten the plans.”

His experimentation started in February 1993. He decided to be patient in view of the persistent drought of the previous winter.

He contacted his friend Matt Engle, who has a shop on the south edge of town.

“We thought we could build a prototype and work through all the kinks that come up,” McDonald said, adding that the first corral built was never sold. “I had the drawings and the ideas in my head, but I didn’t know what I had until we actually built the first one. I didn’t like it. It was too sloppy and I needed to tighten the plans.”

His experimentation started in February 1993. He decided to be patient in view of the persistent drought of the previous winter.

He contacted his friend Matt Engle, who has a shop on the south edge of town.

“We thought we could build a prototype and work through all the kinks that come up,” McDonald said, adding that the first corral built was never sold. “I had the drawings and the ideas in my head, but I didn’t know what I had until we actually built the first one. I didn’t like it. It was too sloppy and I needed to tighten the plans.”

His experimentation started in February 1993. He decided to be patient in view of the persistent drought of the previous winter.

He contacted his friend Matt Engle, who has a shop on the south edge of town.

“We thought we could build a prototype and work through all the kinks that come up,” McDonald said, adding that the first corral built was never sold. “I had the drawings and the ideas in my head, but I didn’t know what I had until we actually built the first one. I didn’t like it. It was too sloppy and I needed to tighten the plans.”

His experimentation started in February 1993. He decided to be patient in view of the persistent drought of the previous winter.

He contacted his friend Matt Engle, who has a shop on the south edge of town.

“We thought we could build a prototype and work through all the kinks that come up,” McDonald said, adding that the first corral built was never sold. “I had the drawings and the ideas in my head, but I didn’t know what I had until we actually built the first one. I didn’t like it. It was too sloppy and I needed to tighten the plans.”

His experimentation started in February 1993. He decided to be patient in view of the persistent drought of the previous winter.

He contacted his friend Matt Engle, who has a shop on the south edge of town.

“We thought we could build a prototype and work through all the kinks that come up,” McDonald said, adding that the first corral built was never sold. “I had the drawings and the ideas in my head, but I didn’t know what I had until we actually built the first one. I didn’t like it. It was too sloppy and I needed to tighten the plans.”

His experimentation started in February 1993. He decided to be patient in view of the persistent drought of the previous winter.

He contacted his friend Matt Engle, who has a shop on the south edge of town.

“We thought we could build a prototype and work through all the kinks that come up,” McDonald said, adding that the first corral built was never sold. “I had the drawings and the ideas in my head, but I didn’t know what I had until we actually built the first one. I didn’t like it. It was too sloppy and I needed to tighten the plans.”

His experimentation started in February 1993. He decided to be patient in view of the persistent drought of the previous winter.

He contacted his friend Matt Engle, who has a shop on the south edge of town.

“We thought we could build a prototype and work through all the kinks that come up,” McDonald said, adding that the first corral built was never sold. “I had the drawings and the ideas in my head, but I didn’t know what I had until we actually built the first one. I didn’t like it. It was too sloppy and I needed to tighten the plans.”

His experimentation started in February 1993. He decided to be patient in view of the persistent drought of the previous winter.

He contacted his friend Matt Engle, who has a shop on the south edge of town.

“We thought we could build a prototype and work through all the kinks that come up,” McDonald said, adding that the first corral built was never sold. “I had the drawings and the ideas in my head, but I didn’t know what I had until we actually built the first one. I didn’t like it. It was too sloppy and I needed to tighten the plans.”

His experimentation started in February 1993. He decided to be patient in view of the persistent drought of the previous winter.

He contacted his friend Matt Engle, who has a shop on the south edge of town.

“We thought we could build a prototype and work through all the kinks that come up,” McDonald said, adding that the first corral built was never sold. “I had the drawings and the ideas in my head, but I didn’t know what I had until we actually built the first one. I didn’t like it. It was too sloppy and I needed to tighten the plans.”

His experimentation started in February 1993. He decided to be patient in view of the persistent drought of the previous winter.

He contacted his friend Matt Engle, who has a shop on the south edge of town.

“We thought we could build a prototype and work through all the kinks that come up,” McDonald said, adding that the first corral built was never sold. “I had the drawings and the ideas in my head, but I didn’t know what I had until we actually built the first one. I didn’t like it. It was too sloppy and I needed to tighten the plans.”

His experimentation started in February 1993. He decided to be patient in view of the persistent drought of the previous winter.

He contacted his friend Matt Engle, who has a shop on the south edge of town.

“We thought we could build a prototype and work through all the kinks that come up,” McDonald said, adding that the first corral built was never sold. “I had the drawings and the ideas in my head, but I didn’t know what I had until we actually built the first one. I didn’t like it. It was too sloppy and I needed to tighten the plans.”

His experimentation started in February 1993. He decided to be patient in view of the persistent drought of the previous winter.

He contacted his friend Matt Engle, who has a shop on the south edge of town.

“We thought we could build a prototype and work through all the kinks that come up,” McDonald said, adding that the first corral built was never sold. “I had the drawings and the ideas in my head, but I didn’t know what I had until we actually built the first one. I didn’t like it. It was too sloppy and I needed to tighten the plans.”

His experimentation started in February 1993. He decided to be patient in view of the persistent drought of the previous winter.

He contacted his friend Matt Engle, who has a shop on the south edge of town.

“We thought we could build a prototype and work through all the kinks that come up,” McDonald said, adding that the first corral built was never sold. “I had the drawings and the ideas in my head, but I didn’t know what I had until we actually built the first one. I didn’t like it. It was too sloppy and I needed to tighten the plans.”

His experimentation started in February 1993. He decided to be patient in view of the persistent drought of the previous winter.

He contacted his friend Matt Engle, who has a shop on the south edge of town.

“We thought we could build a prototype and work through all the kinks that come up,” McDonald said, adding that the first corral built was never sold. “I had the drawings and the ideas in my head, but I didn’t know what I had until we actually built the first one. I didn’t like it. It was too sloppy and I needed to tighten the plans.”

His experimentation started in February 1993. He decided to be patient in view of the persistent drought of the previous winter.

Rawhide Processor



Rawhide Classic



Rawhide Rancho Deluxe



Rawhide Portable Windbreak



Características de todos los corrales portátiles Rawhide

- Puertas de paso de cuatro hombres; no escalar
- Unidad de poder autónoma con batería de ciclo profundo
- Cargador solar de 20 vatios
- Aparatos de tubería de 2 3/8 pulgadas
- Ruedas de goma solida en cada panel
- Cadena en los paneles finales para seguridad y embalaje



La Diferencia **RAWHIDE**



Hecho en los EE. UU.

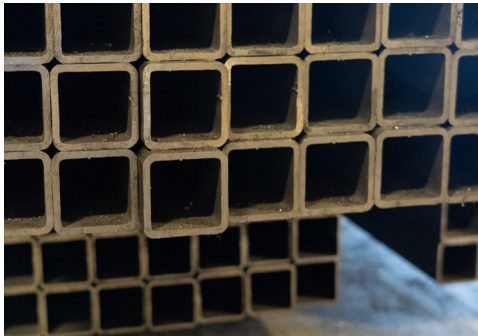


Durabilidad

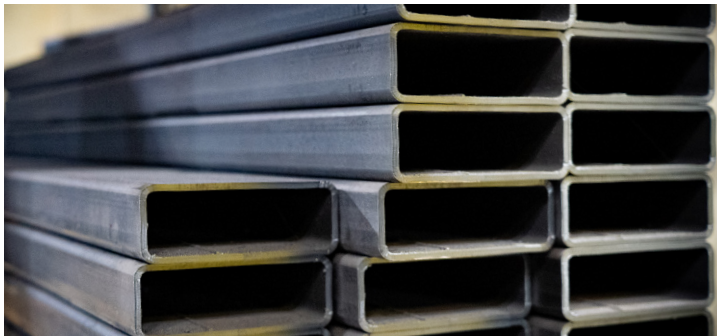


Sistema Hidráulico

La tubería más fuerte en un corral portátil del mercado **Características**



Eléctrico sobre hidráulico con cargador solar de 20 vatios



Sistema de estanterías
Patente de EE. UU. No. 11,979,900



Suspensión del eje de torsión patentada
Patente de EE. UU. No. 11,793,158

Rawhide Processor

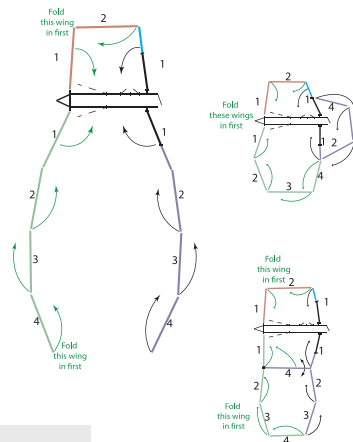
- Configuración rápida de 10 minutos
- Ahorra mano de obra
- Sin levantar: Eléctrico sobre hidráulico con cargador solar de 20 vatios
- Todo el sistema se puede conducir con una doble recogida con pacas redondas de heno
- Tira al límite de velocidad durante transporte por carretera
- Cabe en la misma puerta que un pickup
- Equipo duradero con vida mucho más larga que otros productos
- El sistema de fijación permite la flexibilidad en terrenos desiguales
- Los paneles se pliegan entre si sin desengancharse uno del otro
- Múltiples opciones de corral
- Puertas de marco para clasificación
- Cada panel trabaja como verjas
- Configuraciones ilimitadas: equipo se puede agregado movido por todo el sistema
- El callejón **hidráulico** ajustable con chapa permanente le permite estrechar el callejón para los terneros
- Alternativa a transportar su ganado a casa para procesarlo; puede trabajar en el sitio

Opciones de Processor:

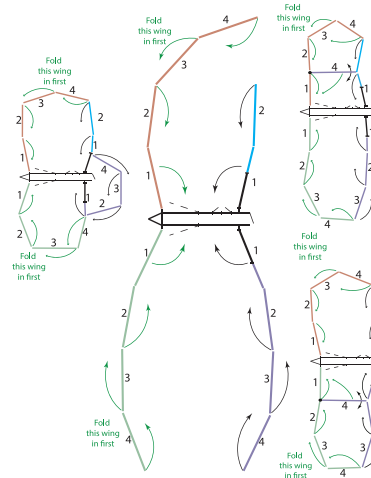
- Cabeza montada en el marco final del callejón
- Canal de carga: dos alturas de camión y una altura de carga en el suelo con suelo ajustable

Especificaciones	Estándar	Grande	Super Grande
Capacidad	100 cabeza, 800 libras	200 cabeza, 800 libras	300 cabeza, 800 libras
Suspensión del eje de torsión	✓	✓	✓
Cuello	✓	✓	✓
Callejón hidráulico de láminas permanentes	✓	✓	✓
Puertas de proa de 10 pies para clasificación	4	4	4
Longitud del marco principal/callejón	24 pies	24 pies	24 pies
14 capas, 8 hoyos, 16 pulgadas—neumáticos con guardabarros de vinilo	2	2	2
Paneles de 18 pies x 6 pies	9	12	15
Paneles de 8 pies x 6 pies	2	2	2
Puertas de palpación/acceso en el callejón	2	2	2
Parada de callejón sin respaldo	1	1	1
Puerta de salida del callejón de 32 pulgadas	1	1	1
Longitud cuando se abre	95 pies	135 pies	175 pies

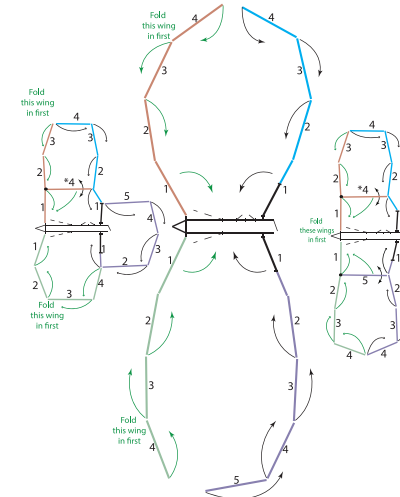
Standard Rawhide Processor



Large Rawhide Processor



Super Large Rawhide Processor



Construcción y trabajo de calidad provee fuerza que dura para una inversión asequible.

“ Nos encanta nuestro Processor. Aquí en Virginia, tenemos muchos grupos pequeños en terreno rentado, 20–45 pares. Yo nunca he estado en un lugar donde no podíamos usar nuestro corral.

—Robbie Reeves, Valley View Farms, Mt. Solon, VA

“ Es la mejor inversión que he hecho. Lo hizo más fácil para el ganado y más fácil para mí.

—Charles See, Stark, KS



Cargadero para Ganado



Verja para cabezas

Estable en terreno desigual

Ruedas en cada panel y el gato eléctrico sobre hidráulico elimina levantamiento y ahorra tiempo.

- Puertas de marco para clasificación
- Las ruedas de transporte son permanentes con suspensión de eje de torsión; no se deslizan de los ejes ni se salen del paso
- Callejón regulable **hidráulico** con láminas permanentes

Rawhide Classic



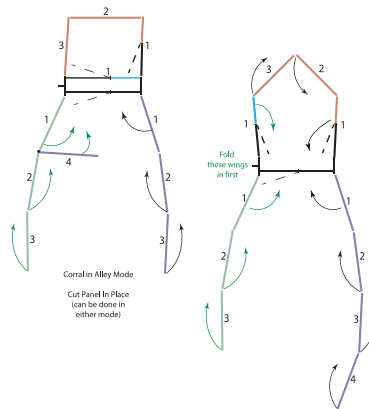
- Configuración rápida de 10 minutos
- Sin levantar: Eléctrico sobre hidráulico con cargador solar de 20 vatios
- Todo el sistema puede ser atravesado por un alimentador de pacas o cubos
- Las ruedas de transporte son desmontables, con una barra estabilizadora adicional para mayor seguridad
- Varias opciones de corrales
- Se tira al límite de velocidad durante el transporte por carretera
- Todos los paneles funcionan como puertas
- Equipo duradero con una vida útil mucho más larga que otros productos
- Configuraciones ilimitadas: se puede agregar o mover equipo por el sistema
- Se puede construir un callejón temporal cubierto; se ajusta la anchura para vacas o terneros

Opciones Clásicas:

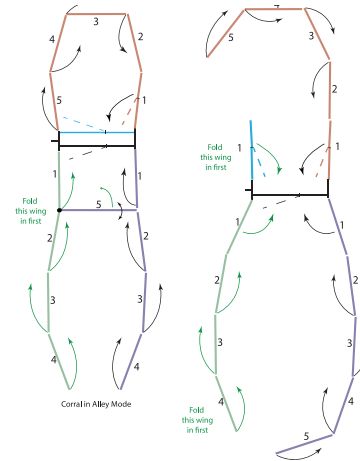
- Parachoques o cuello de cisne
- Puerta de entrada

Especificaciones	Estándar	Grande	Super Grande
Capacidad	100 cabeza, 800 libras	200 cabeza, 800 libras	300 cabeza, 800 libras
Puertas de proa de 10 pies para clasificación	3	3	3
Longitud del marco principal/callejón	24 pies	24 pies	24 pies
14 capas, 8 hoyos, 16 pulgadas—neumáticos con guardabarros de vinilo	2	2	2
Paneles de 20 pies x 6 pies	7	8	9
Paneles de 18 pies x 6 pies	2	3	4
Paneles de 8 pies x 6 pies	2	2	2
Puerta de salida del callejón de 32 pulgadas	1	1	1
Longitud cuando se abre	75 pies	135 pies	135 pies

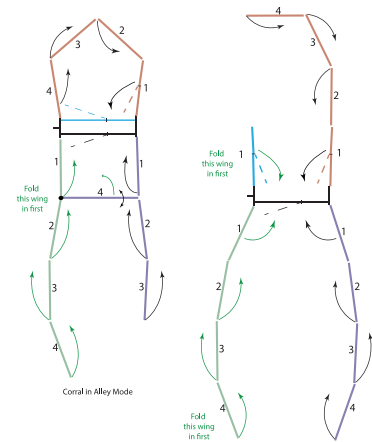
Standard Rawhide Classic



Large Rawhide Classic



Super Large Rawhide Classic



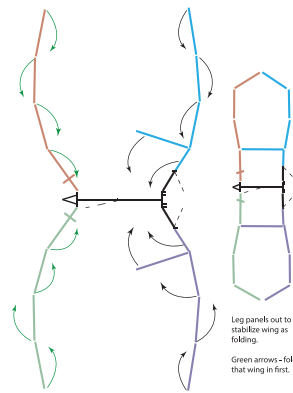
El Corral Portátil Sobre Ruedas Más Grande



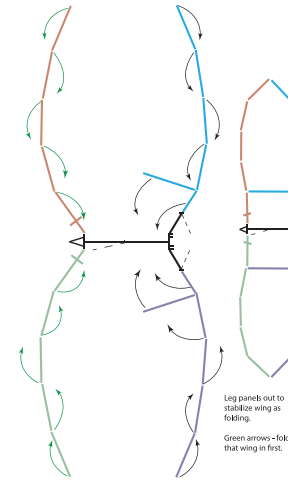
- Perfecto para atrapar, clasificar y cargar grandes cantidades
- Sin elevación: eléctrico en lugar de hidráulico con sistema de carga solar de 20 vatios
- Tracción al límite de velocidad durante el transporte por carretera
- Ruedas de transporte dobles
- Sistema de suspensión de eje de torsión patentado
- Forma de dos a cuatro corrales

Especificaciones	Estándar	Grande	Super Grande
Capacidad	400 cabeza, 800 libras	500 cabeza, 800 libras	600 cabeza, 800 libras
Puertas de proa de 10 pies para clasificación	3	3	3
Longitud del marco principal/callejón	24 pies	24 pies	24 pies
14 capas, 8 hoyos, 16 pulgadas—neumáticos con guardabarros de vinilo	4	4	4
Paneles de 22 pies x 6 pies	16	20	24
Paneles de 8 pies x 6 pies	2	2	2
Longitud cuando se abre	150 pies	190 pies	230 pies

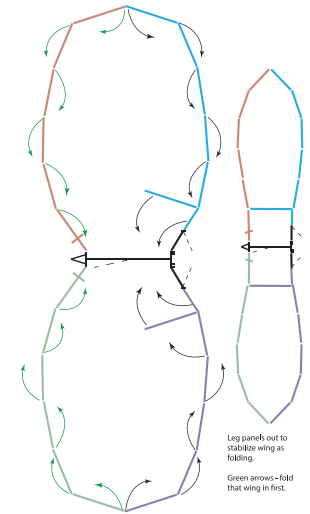
Standard Rancho Deluxe



Large Rancho Deluxe



Super Large Rancho Deluxe



Rawhide Portable Windbreak

- Patente pendiente, con la misma calidad y durabilidad que nuestros corrales portátiles Rawhide
- Sistema de fijación flexible compatible para usar junto con nuestros corrales
- Se tira a velocidad de carretera
- El techo se eleva y baja hidráulicamente con cuatro cilindros; tirantes de tubería para el techo en modo "arriba"; soporte de marco central para el techo en cada lado; el techo tiene 24 pies de largo y 19 pies de ancho
- Sistema de anclaje con taladro y cargador provisto; incluye seis anclajes de tornillo de 8 pies de largo y 18 pulgadas
- Paneles: paneles de 8 pies de alto y 24 pies de largo; ranuras laterales estratégicas de 5 pulgadas para permitir que pase algo de viento
- Ruedas: ruedas de goma maciza dobles en cada panel
- Energía: cargador solar de 20 vatios, eléctrico sobre hidráulico; inversor para convertir de 12 a 110 voltios (carga la batería y el sistema de carga para el taladro)

Opciones para el Cortaviento:

- Corral de parto con puerta para la cabeza y paneles de entrada para "solo terneros" bajo techof

Opciones de tamaño de Cortavientos:

- Estándar: 150 pies lineales, seis paneles en total (tres en cada lado)
- Grande: 200 pies lineales, ocho paneles en total (cuatro en cada lado)



Techo con tirantes desde el exterior



Tirante de anclaje



Ruedas dobles

El Cortaviento puede soportar vientos de más de 80 km/h. No solo es ideal para detener el viento, sino que también tiene un cobertizo para descansar incorporado y una opción de corral para partos.



RAWHIDE



www.rawhideportablecorral.com



785-263-3436 • 900 N. Washington St. Abilene, Kansas

Sold locally by:

